


-  [English](#)
 -  [German](#)
 -  [Dutch](#)
 -  [French](#)



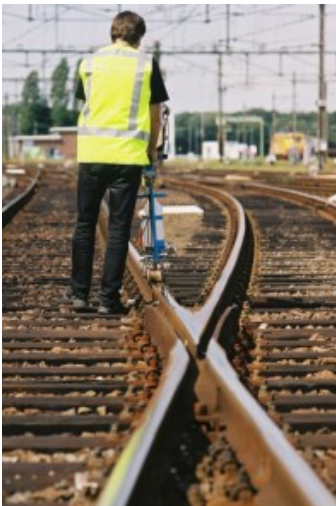
close menu menu



- [RSS](#)

Hand measurement

Ultrasonic testing of rails using the rail testing trolley.



In order to assure safety in rail transport, rails in track must be tested regularly. Whilst rail inspection trains test the lines at high speed, the rail testing trolley is used in the area of stations.

WPG 4 Type PLR



WPG 4 Rohmann



SPG 2



SPG 3


WPG and SPG Hand measurement systems

Gauge

1435 mm

Test angle WPG

45°-3°, four tracks at a time

Test angle SPG

70°, 38°, 0°, -38°, -70°